

Lumens®

Your Success, Our Focus

About Lumens

Integrated solutions that deliver an exceptional user experience by seamlessly integrating with Lumens products and those of other AV brands.

www.MyLumens.com

April 2026

Product Brochure

Our customers are our greatest asset, and we always support them.

Lumens® Digital Optics Inc.,
a PEGATRON Group company,
is a leader in optical and Pro AV products.



Product Lines

Lumens is a manufacturer of digital video equipment, AV systems and IP technology. With a heritage going back over 20 years, excellence in support and service, and an industry-leading warranty, Lumens is a name to depend on.



OIP Bridge



CamConnect



Media Processor



**Auto-Tracking
PTZ Cameras**



PTZ Cameras



Fixed Cameras



Conferencing Cameras



**Document Cameras /
Visualizers**

OIP Bridge

The future of video conversion, distribution and integration with NDI and Dante AV-H support

AV over IP is the real-time distribution of audio and video, over local (LAN) or wide (WAN) area networks. Lumens OIP-N series devices can transmit and receive HD or 4K video over networks at very low latency, and feature both HDMI and USB-C (DisplayPort) connectivity. OIP-N supports formats including NDI HX3, RTSP, SRT, Dante Audio and Dante AV-H, and features HDMI and USB-C conversion.



**Dante
Series**

**NDI
Series**

**OIP-D
Series**

OIP Bridge

Dante AV-H™

OIP-N60D
Dante AV-H



NDI HX3

OIP-N60D



Dante Ready™



NDI HX3

OIP-N40E



OIP-D50E/D



OIP-D40E/D



OIP-D50C



| | | | | | | |
|--------------------------|-------------------|--------------------------|----------------------------------------|------------|---------------|----------|
| Network Bandwidth | 1 Gbps | 1 Gbps | 1 Gbps | 1 Gbps | 1 Gbps | 100 Mbps |
| Max Resolution | 4K60 | 4K60 | 1080p60 | 4K30 4:4:4 | 1080p60 4:4:4 | NA |
| Video Output | HDMI / UVC | HDMI / UVC | HDMI / UVC | HDMI / VGA | HDMI | HDMI |
| Video Input | - | - | HDMI / USB-C | HDMI / VGA | HDMI | - |
| IP Protocol | RTSP / Dante AV-H | NDI HX3 / NDI HX2 / RTSP | RTSP / NDI HX2 / NDI HX3 / Dante Ready | - | - | - |
| PoE | PoE | PoE | PoE | PoE | - | PoE |
| Ethernet Port | 1 Port | 1 Port | 1 Port | 3 Ports | 1 Port | 1 Port |

OIP Bridge

Software Compatible with OIP Bridge



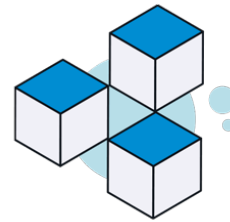
Deployment Tool 2.0

Remotely manage and control multiple Lumens IP devices.



Routing Switcher

Routing Switcher provides live multi-view monitoring of OIP-N network transcoders and Lumens IP cameras.



Companion Module

Control Deck for Lumens PTZ Cameras and Live Streaming Device.

Accessories



VS-KB21N
IP Camera Controller
with NDI



VS-KB21
IP Camera Controller



OIP-AC01
6U Rack-mount Chassis
For AV over IP series

CamConnect

AI-enabled voice tracking and automated switching for meeting spaces, conference suites and lecture halls

CamConnect Pro is an AI-enabled processor which works with Lumens PTZ cameras and array microphones from the likes of Audio Technica, Nureva, Sennheiser, Shure, Televic and Yamaha. By dynamically pinpointing the position of the active voices in a meeting room, CamConnect Pro dramatically enhances meetings, with no user input required. The system transforms the dial-in experience for remote meeting guests, external conference delegates and students engaged in distance learning.



**Voice
Tracking**

**Multiple
Camera**

AI

CamConnect

**AI-Box1
CamConnect Pro**



| | |
|-----------------------------------------|------------------------------------------------------|
| Maximum Supported Cameras | 4xIP or 3xIP + 1xUSB Cameras |
| Supports Multi-array Microphones | Yes |
| Supports Video Input Format | IP (1080@60/50 fps), USB (1080p@30/25) |
| Video Output | USB (USB Type-C), HDMI |
| Power | USB Type-C Power (5V, 4A) |
| Voice Tracking | Yes, with supported directional microphone arrays |
| Camera Auto Switching | Yes |
| People Tracking | Yes |
| Center Stage | Yes |
| Multiview (Video Source Mixing) | Yes, PBP, three-split screen, four-split screen view |
| AI Director | Conversation mode, Customized mode |
| Motionless Instant Cut | Primary & Secondary Camera |

**BC-200
Room Analysis Camera**



| | |
|---------------------------------|--------------------|
| Sensor | 1/2.8" 2.16MP CMOS |
| Data Output | Ethernet |
| Horizontal View | 54° |
| PoE | PoE |
| Camera Control | Ethernet |
| Human Detection Distance | 1.5m ~ 8m |

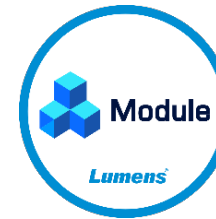
CamConnect

Software Compatible with CamConnect



Deployment Tool 2.0

Remotely manage and control multiple Lumens IP devices.



CamConnect Control Module

Integrate Lumens CamConnect Pro with third party controllers.

**Note: Software compatibility applies to AI-Box1 only.*

Media Processor

Multi-channel switchers, recorders, and live streaming processors

An all-in-one media processor produces, records, and streams audio-visual presentations and multi-source productions. Switching and mixing multiple sources creates engaging and professional events, complete with logo insertion and a lower third overlay, backgrounds and timestamp. Media Processors record the live program output and each video input independently. They simultaneously stream live to your preferred platform including YouTube, Facebook or your IPTV system. Lumens' Media Processors integrate seamlessly with Panopto and Kaltura.



**Record
&
Stream**

Switch

**Integrate
With LMS**

Media Processor

*Model without an HDD available in specific regions.

NDI HIGH BANDWIDTH



LC300S

NDI CERTIFIED NDI HIGH BANDWIDTH



LC300



LC200

NDI.HX2



LC100N



LC100

| | | | | | |
|-------------------------------|----------------------------------------------------------------------------------------------------|----------------------------------------------------------------------------------------------------|-------------------------------------|----------------------------------------------------------------------|----------------------------------------------------------------------|
| Channel Mixing | 4 Channels | 4 Channels | 4 Channels | 2 Channels | 2 Channels |
| Recording | 2160p60 | 2160p60 | 1080p60 | 1080p60 | 1080p60 |
| Streaming | 2160p60 | 2160p60 | 1080p60 | 1080p60 | 1080p60 |
| Video Input Interface | HDMI x4 / 3G-SDI x1 / 12G-SDI x1 | HDMI x4 / 3G-SDI x1 | HDMI x4 | HDMI x2 / SDI x2 | HDMI x2 / SDI x2 |
| IP and USB Video Input | Lumens IP Camera / NDI High Bandwidth / NDI HX2 / NDI HX3 / RTSP / SRT / USB Camera | Lumens IP Camera / NDI High Bandwidth / NDI HX2 / NDI HX3 / RTSP / SRT / USB Camera | Lumens IP Camera / RTSP | Lumens IP Camera / NDI HX2 / RTSP / USB Camera | Lumens IP Camera / RTSP / USB Camera |
| Audio Input | HDMI or SDI Audio / Line In x2 / Combo(XLR/TRS) x2 | HDMI or SDI Audio / Line In x2 / Combo(XLR/TRS) x2 | HDMI Audio x4 / Line In x4 | HDMI or SDI Audio x2 / Line In x1 / Combo(XLR/TRS) x2 / USB Audio x1 | HDMI or SDI Audio x2 / Line In x1 / Combo(XLR/TRS) x2 / USB Audio x1 |
| Video Output | HDMI x2 / HDMI Pass-Thru x1 / UVC x1 | HDMI x2 / HDMI Pass-Thru x1 / UVC x1 | HDMI x2 | HDMI x2 / HDMI Pass-Thru x1 | HDMI x2 / HDMI Pass-Thru x1 |
| Built-in Storage | 4TB HDD | 4TB HDD | 1TB HDD Optional: 2TB HDD | 2TB HDD | 2TB HDD* |
| Streaming Protocol | RTSP / NDI High Bandwidth / NDI HX / RTMP / RTMPS / MPEG-TS / SRT / TCP / UDP / HTTP / DHCP Client | RTSP / NDI High Bandwidth / NDI HX / RTMP / RTMPS / MPEG-TS / SRT / TCP / UDP / HTTP / DHCP Client | RTP / RTSP / RTMP / RTMPS / MPEG-TS | RTP / RTSP / NDI HX2 / RTMP / RTMPS / MPEG-TS / SRT | RTP / RTSP / RTMP / RTMPS / MPEG-TS / SRT |
| Remote Control Panel | LC-RC01 | LC-RC01 | LC-RC01 | LC-RC01 | LC-RC01 |

Media Processor

Software Compatible with Media Processor



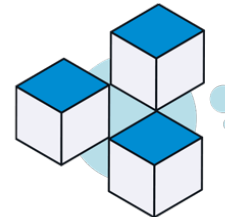
Deployment Tool 2.0

Remotely manage and control multiple Lumens IP devices.



CaptureVision Mini Controller

Lumens CaptureVision systems are designed to offer organization and events a powerful but easy-to-use media station.



Companion Module

Control Deck for Lumens PTZ Cameras and Live Streaming Device.

Accessories



LC-RC01
Remote Control Panel
for Media Processors

Auto-Tracking PTZ Cameras

Fully automated Cameras

A motion-tracking camera films a presenter without the need for a camera operator. It tracks them as they walk back and forth across a stage, classroom, training room or seminar space. With AI, it is trained to detect the human face and automatically pan, tilt and zoom to follow the targeted person. This automated camera system is especially suited for environments with a limited technical crew and is great for lecture capture, corporate training and acts of worship.



**AI
Enabled**

**Auto
Framing**

**Gesture
Control**

Auto-Tracking PTZ Cameras



NDI HX3

VC-TR61N



Dante Ready™

VC-TR61



Dante AV-H™

VC-TR60A
Dante AV-H



VC-TR60A



| | | | | |
|---------------------------|------------------------------------------------------|-------------------------------------------|-----------------------------------------------|-------------------------------------------|
| Sensor | 1/1.8" 8.48M | 1/1.8" 8.48M | 1/2.8" 8.51M | 1/2.8" 8.51M |
| Resolution | 2160p60 | 2160p60 | 2160p60 | 2160p60 |
| Video Output | HDMI / Ethernet / 3G-SDI / USB | HDMI / Ethernet / 3G-SDI / USB | HDMI / Ethernet / USB | HDMI / Ethernet / USB |
| Zoom | 30x | 30x | 12x | 12x |
| Horizontal View | PTZ: 59.2° Panoramic: 85.1° | PTZ: 59.2° Panoramic: 85.1° | PTZ: 81° Panoramic: 110° | PTZ: 81° Panoramic: 110° |
| PoE | PoE+ | PoE+ | PoE+ | PoE+ |
| Audio In | Line In | Line In | Line In | Line In |
| Video Compression | H.265(HEVC) / H.264 / MJPEG / YUV2 / NV12 | H.265(HEVC) / H.264 / MJPEG / YUV2 / NV12 | H.264 / MJPEG / NV12 | H.264 / MJPEG / NV12 |
| Streaming Protocol | NDI HX3 / NDI HX2 / HTTP / RTSP / RTMP / RTMPS / SRT | RTSP / RTMP / RTMPS / SRT / Dante Ready | HTTP / RTSP / RTMP / RTMPS / SRT / Dante AV-H | HTTP / RTSP / RTMP / RTMPS / SRT |
| Camera Control | RS-232 / Ethernet / USB / Remote | RS-232 / Ethernet / USB / Remote | RS-232 / RS-422 / Ethernet / USB / Remote | RS-232 / RS-422 / Ethernet / USB / Remote |

Auto-Tracking PTZ Cameras



| | | | |
|---------------------------|----------------------------------------|---------------------------------------------------------|--------------------------------------------------|
| Sensor | 1/2.8" 2.16MP CMOS | PTZ: 1/2.8" 2.16MP Panoramic: 1/2.8" 2MP CMOS | PTZ: 1/2.8" 2.16MP Panoramic: 1/2.8" 2MP CMOS |
| Resolution | 1080p60 | 1080p60 | 1080p60 |
| Video Output | 3G-SDI / HDMI / Ethernet | 3G-SDI / HDMI / Ethernet / USB | 3G-SDI / HDMI / Ethernet / USB |
| Zoom | 20x | 20x | 20x |
| Horizontal View | 57° | PTZ: 58.7° Panoramic: 87° | PTZ: 58.7° Panoramic: 87° |
| PoE | PoE+ | PoE | PoE |
| Audio In | Line In / MIC In | Line In / MIC In | Line In / MIC In |
| Video Compression | H.264 / MJPEG | H.264 / MJPEG | H.264 / MJPEG |
| Streaming Protocol | RTSP / RTMP / RTMPS / MPEG-TS / SRT | NDI HX3 / NDI HX2 / HTTP / RTSP / RTMP / RTMPS / SRT | HTTP / RTSP / RTMP / RTMPS / SRT |
| Camera Control | RS-232 / RS-422 / Remote | RS-232 / RS-422 / Ethernet/ USB / Remote | RS-232 / RS-422 / Ethernet/ USB / Remote |

Auto-Tracking PTZ Cameras



NDI.HX3



VC-TR40N



VC-TR40



VC-TR30



VC-TR1

| | | | | |
|---------------------------|------------------------------------------------------|---------------------------------------------|---------------------------------------------|------------------------------------------------|
| Sensor | PTZ: 1/2.8" 2.16MP Panoramic: 1/2.8" 2MP | PTZ: 1/2.8" 2.16MP Panoramic: 1/2.8" 2MP | PTZ: 1/2.8" 2.16MP Panoramic: 1/2.8" 2MP | PTZ: 1/2.8" 2.13MP Panoramic: 1/2.5" 8.57MP |
| Resolution | 1080p60 | 1080p60 | 1080p60 | 1080p60 |
| Video Output | HDMI / 3G-SDI / USB / Ethernet | 3G-SDI / HDMI / Ethernet / USB | HDMI / Ethernet / USB | HDMI / 3G-SDI / USB / Ethernet |
| Zoom | 20x | 20x | 12x | 20x |
| Horizontal View | PTZ: 58.7° Panoramic: 111° | PTZ: 58.7° Panoramic: 111° | PTZ: 72.5° Panoramic: 111° | PTZ: 58.7° Panoramic: 100° |
| PoE | PoE | PoE | PoE | PoE+ |
| Audio In | Line In / Mic In | Line In / MIC In | Line In / MIC In | Line In |
| Video Compression | H.264 / MJPEG | H.264 / MJPEG | H.264 / MJPEG | HEVC(H.265) / H.264 / MJPEG |
| Streaming Protocol | NDI HX3 / NDI HX2 / HTTP / RTSP / RTMP / RTMPS / SRT | HTTP / RTSP / RTMP / RTMPS / SRT | HTTP / RTSP / RTMP / RTMPS / SRT | RTSP / RTMP / RTMPS |
| Camera Control | RS-232 / Ethernet / USB / Remote | RS-232 / Ethernet/ USB / Remote | RS-232 / Ethernet / USB / Remote | RS-232 / Ethernet / USB / Remote |

Auto-Tracking PTZ Cameras

Software Compatible with Auto-Tracking Cameras



Deployment Tool 2.0

Remotely manage and control multiple Lumens IP devices.



Camera Controller

Remotely manage and control multiple Lumens cameras via their IP and USB interfaces.



Routing Switcher

Routing Switcher provides live multi-view monitoring of OIP-N network transcoders and Lumens IP cameras.



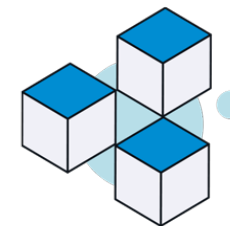
Virtual Camera 2.0

Allows users to connect a Lumens professional IP camera to the host computer using Ethernet.



OBS Plugin

OBS Plugin and Dockable Controller for PTZ & Box Cameras.



Companion Module

Control Deck for Lumens PTZ Cameras and Live Streaming Device.

Auto-Tracking PTZ Cameras

Accessories



VS-KB21N
IP Camera
Controller
with NDI



VS-KB21
IP Camera
Controller



VS-K20
PTZ Camera
Controller with
Joystick



PTH-01
Remote Head



CAB-AOCH-XL
HDMI 2.0 Active
Extender Cable



CAB-AOCU-ML
USB 3.1 Gen 1 Active
Extender Cable



CAB-RS232-01
VISCA Cable
Extender



VC-AC06
VISCA Cable Extender



VC-AC07
VISCA Cable Extender



VC-AC03
USB PTZ Camera
Wall Mount



VC-WM11
Camera Wall Mount



VC-WM12
PTZ Wall Mount



VC-WM13
J-type Ceiling Mount



VC-WM14
3-in-1 Multipurpose
Mount



VC-WM15
J-type Ceiling
Mount



VC-IR01
Remote Control

PTZ Cameras

Robotic Camera for Remote Production Workflows up-to 4K 60fps

PTZ are robotic cameras with remote pan, tilt, and zoom control. Multiple PTZ cameras can be remotely managed by a single operator. Their ability to zoom, swivel and tilt, and move smoothly from position to position makes them suitable for use in live events, multi-camera studios, lecture capture, and conference production. Virtually silent, robotic cameras can be discreetly placed in almost any location and integrated into video, broadcast, and AV installations.



High
Quality

Smoothly

NDI

PTZ Cameras



| | | | | |
|---------------------------|-------------------------------------------|-------------------------------------------|----------------------------------|---------------|
| Sensor | 1/1.8" 9.17MP | 1/2.8" 2.16MP | 1/2.8" 2.16MP | 1/2.8" 2.41MP |
| Resolution | 2160p59.94 | 1080p60 | 1080p60 | 1080p60 |
| Video Output | 12G-SDI / HDMI 2.0 / Ethernet / USB 3.0 | 3G-SDI / HDMI / Ethernet / USB | HDMI / Ethernet / USB 3.0 | HDMI / USB |
| Zoom | 30x | 20x | 12x | 12x |
| Horizontal View | 63° | 57° | 72.5° | 72° |
| PoE | PoE++ | PoE | PoE | PTZ |
| Audio In | Line In / MIC In | Line In / MIC In | Line In / MIC In | NA |
| Video Compression | HEVC(H.265) / H.264 / MJPEG | H.264 / MJPEG | H.264 / MJPEG | NA |
| Streaming Protocol | RTSP / RTMP / RTMPS / MPEG-TS / SRT | RTSP / RTMP / RTMPS / MPEG-TS / SRT | RTSP / RTMP / RTMPS / SRT | NA |
| Camera Control | RS-232 / RS-422 / Ethernet / USB / Remote | RS-232 / RS-422 / Ethernet / USB / Remote | RS-232 / Ethernet / USB / Remote | VISCA / UVC |

PTZ Cameras with NDI



NDI HIGH BANDWIDTH
NDI.HX3
VC-A71P-HN



NDI.HX3
VC-A71SN



NDI.HX2
VC-A71PN



NDI.HX2
VC-A51PN



| | | | | |
|---------------------------|-----------------------------------------------------------------------------------|---------------------------------------------------------------|-------------------------------------------------|--------------------------------------------------|
| Sensor | 1/1.8" 9.17MP | 1/1.8" 9.17MP | 1/1.8" 9.17MP | 1/2.8" 2.16MP |
| Resolution | 2160p59.94 | 2160p59.94 | 2160p59.94 | 1080p60 |
| Video Output | HDMI 2.0 / Ethernet / 12G-SDI / 3G-SDI / USB3.0 | 12G-SDI / HDMI 2.0 / Ethernet / USB3.0 | HDMI 2.0 / Ethernet | 3G-SDI / HDMI / Ethernet |
| Zoom | 30x | 30x | 30x | 20x |
| Horizontal View | 63° | 63° | 63° | 57° |
| PoE | PoE++ | PoE++ | PoE+ | PoE+ |
| Audio In | Line In / MIC In | Line In / MIC In | Line In / MIC In | Line In / MIC In |
| Video Compression | HEVC(H.265) / H.264 / MJPEG | HEVC(H.265) / H.264 / MJPEG | HEVC(H.265) / H.264 | H.264 / MJPEG |
| Streaming Protocol | NDI High Bandwidth / NDI HX3 / NDI HX2 / RTSP / RTMP / RTMPS /MPEG-TS / SRT | NDI HX3 / NDI HX2 / RTSP / RTMP / RTMPS / MPEG-TS / SRT | NDI HX2 / RTSP / RTMP / RTMPS /MPEG-TS / SRT | NDI HX2 / RTSP / RTMP / RTMPS / MPEG-TS / SRT |
| Camera Control | RS-232 / RS-422/ Ethernet / USB 3.0 / Remote | RS-232 / RS-422 / Ethernet / USB 3.0 / Remote | RS-232 / RS-422 / Ethernet / Remote | RS-232 / RS-422 / Ethernet / Remote |

PTZ Cameras

Software Compatible with PTZ Cameras



Deployment Tool 2.0

Remotely manage and control multiple Lumens IP devices.



Camera Controller

Remotely manage and control multiple Lumens cameras via their IP and USB interfaces.



Routing Switcher

Routing Switcher provides live multi-view monitoring of OIP-N network transcoders and Lumens IP cameras.



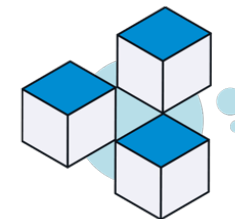
Virtual Camera 2.0

Allows users to connect a Lumens professional IP camera to the host computer using Ethernet.



OBS Plugin

OBS Plugin and Dockable Controller for PTZ & Box Cameras.



Companion Module

Control Deck for Lumens PTZ Cameras and Live Streaming Device.

PTZ Cameras

Accessories



VS-KB21N
IP Camera
Controller
with NDI



VS-KB21
IP Camera
Controller



VS-K20
PTZ Camera
Controller with
Joystick



CAB-AOCH-XL
HDMI 2.0 Active
Extender Cable



CAB-AOCU-ML
USB 3.1 Gen 1 Active
Extender Cable



CAB-RS232-01
VISCA Cable
Extender



VC-AC06
VISCA Cable Extender



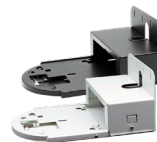
VC-AC07
VISCA Cable Extender



VC-AC03
USB PTZ Camera
Wall Mount



VC-WM11
Camera Wall Mount



VC-WM12
PTZ Wall Mount



VC-WM13
J-type Ceiling Mount



VC-WM14
3-in-1 Multipurpose
Mount



VC-WM15
J-type Ceiling
Mount



VC-IR01
Remote Control

Fixed Cameras

Designed for professional AV environments

Lumens fixed cameras high quality video from a dedicated viewpoint with excellent color accuracy and image clarity. Designed for dependable, always-on performance, they offer smooth operation, low maintenance, and straightforward integration into professional AV systems. With Lumens' advanced imaging technology at the core, these cameras provide a reliable foundation for any setup requiring a fixed, high-performance video source.



**High
quality
video**

**Easy
management**

**Multiple
control
protocols**

Fixed Cameras



| | | | |
|---------------------------|-------------------------------------|-------------------------------------|-------------------------------------|
| Sensor | 1/2.5" 8.57MP | 1/2.5" 8.57MP | 1/1.8" 9.17MP |
| Resolution | 1080p60 | 1080p60 | 2160p60 |
| Video Output | 3G-SDI / HDMI / Ethernet | 3G-SDI / HDMI / Ethernet | HDMI 2.0 / USB / Ethernet |
| Zoom | 30x (Optical) | 30x (Optical) | 12x (Digital) |
| Horizontal View | 60° | 68° | 102° |
| PoE | PoE | PoE | PoE |
| Audio In | Line In / Mic In | Line In / Mic In | Line In / Mic In |
| Video Compression | HEVC(H.265) / H.264 | HEVC(H.265) / H.264 | HEVC(H.265) / H.264 / MJPEG |
| Streaming Protocol | RTSP / RTMP / RTMPS / MPEG-TS / SRT | RTSP / RTMP / RTMPS / MPEG-TS / SRT | RTSP / RTMP / RTMPS / MPEG-TS / SRT |
| Camera Control | RS-232 / Ethernet | RS-232 / Ethernet | Ethernet / USB / Remote |

Fixed Cameras

Software Compatible with Fixed Cameras



Deployment Tool 2.0

Remotely manage and control multiple Lumens IP devices.



Camera Controller

Remotely manage and control multiple Lumens cameras via their IP and USB interfaces.



Routing Switcher

Routing Switcher provides live multi-view monitoring of OIP-N network transcoders and Lumens IP cameras.



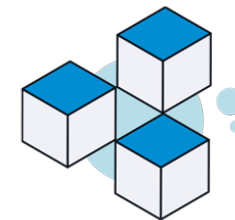
Virtual Camera 2.0

Allows users to connect a Lumens professional IP camera to the host computer using Ethernet.



OBS Plugin

OBS Plugin and Dockable Controller for PTZ & Box Cameras.



Companion Module

Control Deck for Lumens PTZ Cameras and Live Streaming Device.

Fixed Cameras

Accessories



CAB-AOCH-XL
HDMI 2.0 Active
Extender Cable



CAB-AOCU-ML
USB 3.1 Gen 1 Active
Extender Cable



VC-AC06
VISCA Cable Extender



VC-AC07
VISCA Cable Extender



VC-AC03
USB PTZ Camera
Wall Mount



VC-WM11
Camera Wall Mount



VC-WM13
J-type Ceiling Mount



VC-WM14
3-in-1 Multipurpose Mount



VC-WM15
J-type Ceiling Mount



VC-IR01
Remote Control

Conferencing Cameras

Webcams, Huddle Room Cameras and Integrated Video Soundbars

Video conferencing cameras are designed to work with standard UC platforms including MS Teams, Zoom and Webex, and to support sharing tools such as Barco ClickShare. Professional VC cameras capture enhanced video and audio quality and offer users much greater versatility than built-in laptop cameras. Advanced features include voice-tracking camera technology, ePTZ functionality with adaptive auto-framing, and robotic heads with optical zooms for use larger rooms.



**Web
Cam**

**Auto
Framing**

**Integrated
Video
Soundbars**

Conferencing Cameras



| | | | | | |
|--------------------------------------|---------------------------------------------------|-----------------|-----------------------|-----------------------|---------------|
| Sensor | 1/2.8" 8.29MP | 1/2.8" 8.29MP | 1/2.8" 8.57MP | 1/2.3" 12.35MP | 1/2.7" 2.13MP |
| Resolution | 2160p30 | 2160p30 | 2160p30 | 1080p60 | 1080p30 |
| Video Output | USB | USB | USB | USB3.0 | USB |
| Zoom | 1080p: 4x 720p: 8x | 1080p: 4x | 1080p: 2x 720p: 3x | 1080p: 2x 720p: 3x | NA |
| Horizontal View | 110° | 110° | 110° | 110° | 90° |
| PTZ | ePTZ | ePTZ | ePTZ | ePTZ | NA |
| Microphone | Built-in 4 Mics 2 Expansion Mics (optional) | Built-in 5 Mics | Dual-Mics | Dual Mics | Dual Mics |
| Voice Tracking / Auto Framing | Voice Tracking / Auto Framing | Auto Framing | Auto Framing | NA | NA |
| Control Interface | USB | USB | USB | USB | USB |
| Control Protocol | UVC / UAC | UVC / UAC | UVC / UAC | UVC / UAC | UVC / UAC |

Conferencing Cameras

Software Compatible with Conferencing Cameras



Deployment Tool 2.0

Remotely manage and control multiple Lumens IP devices.



Camera Controller

Remotely manage and control multiple Lumens cameras via their IP and USB interfaces.



Routing Switcher

Routing Switcher provides live multi-view monitoring of OIP-N network transcoders and Lumens IP cameras.



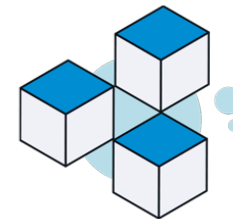
Virtual Camera 2.0

Allows users to connect a Lumens professional IP camera to the host computer using Ethernet.



OBS Plugin

OBS Plugin and Dockable Controller for PTZ & Box Cameras.



Companion Module

Control Deck for Lumens PTZ Cameras and Live Streaming Device.

Conferencing Cameras

Accessories



CAB-AOCH-XL
HDMI 2.0 Active
Extender Cable



VC-AC03
USB PTZ Camera
Wall Mount



CAB-AOCU-ML
USB 3.1 Gen 1 Active
Extender Cable



VC-IR01
Remote Control



VC-AC06
VISCA Cable Extender



MS-EM1
Expansion Microphone
for MS-10S



VC-AC07
VISCA Cable Extender

Document Cameras / Visualizers

High-performance live presentation visualizers, compatible with Lumens Ladibug software

Lumens' versatile 4K and HD document cameras are excellent tools for capturing and displaying documents, textbooks, assignments, and even small objects. Ideal for use in education, training, courtrooms and presentation areas, document cameras produce live detailed images, ready for display on monitors and computer screens. Lumens visualizers work both in-person and in hybrid learning environments.



Interactive Learning

Easy Demonstration

Hybrid Learning

Document Cameras / Visualizers



| | | | | | |
|------------------------|----------------------------|-----------------------------|-----------------------------|-----------------------------|-----------------------------|
| Total Zoom | 240x | 30x | 16x | 16x | 16x |
| Mechanical Zoom | 10x | 6.8x | 7x | 8x | 6x |
| Digital Zoom | 12x | 30x | 16x (via Software) | 16x (via Software) | 16x (via Software) |
| Resolution | 1080p30 | 2160p30 | 2160p30 | 1080p30 | 1080p30 |
| Shooting Area | 14.6" x 11" (370 x 280mm) | 16.5" x 12.4" (420 x 316mm) | 16.8" x 12.6" (428 x 321mm) | 18.8" x 14.1" (480 x 360mm) | 17.8" x 13.4" (453 x 340mm) |
| Lamp | LEDx2 | LEDx1 | LEDx1 | LEDx1 | LEDx1 |
| Input | VGA / HDMI | HDMI | NA | NA | NA |
| Output | VGA / HDMI / USB / C-Video | HDMI / USB | USB 3.0 | USB | USB Type-C |
| Power | Built-in Power Supply | External, 12V DC Adapter | USB Bus Power | USB Bus Power | USB Bus Power |
| Control | RS-232 / USB | USB | USB | USB | USB |

Document Cameras / Visualizers



PS753



CL511

| | | |
|------------------------|----------------------------------|-----------------------------------------------|
| Total Zoom | 300x | 300x |
| Mechanical Zoom | NA | NA |
| Digital Zoom | 30x | 15x |
| Resolution | 2160p30 | 2160p30 |
| Shooting Area | 20.5" x 12.1" (522 x 308mm) | At 2m Height 87.9" x 47.6" (2235 x 1211mm) |
| Lamp | LED x 2 A4 Size LED Backlight | Laser Indicator |
| Input | HDMI | USB |
| Output | HDMI / VGA / USB / Ethernet | VGA / HDMI / USB / Ethernet |
| Power | External, 12V DC Adapter / PoE+ | PoE+ / External, 12V DC |
| Control | RS-232 / USB / IP | RS-232 / USB / IP |

Document Cameras / Visualizers

Compatible Software



Ladibug 4K

Transform Your Document Camera with the Ladibug Suite of Creative Tools.

Accessories



CL-A01
Ceiling Mount Bridge For
CL511



DC-A06
Extender USB Cable
USB 2.0 cable extender



DC-A07
Microscope Adapter
*For DC136 & DC172
Document cameras*



PS-A04
PS Padded Bag
For the PS Document Camera



DC-A16
Mini-DIN Adapter
*For RS232, C-Video,
DC visualizer series only*

Solution Partners

S01. Automated Voice Tracking



S02. BYOD & BYOM



S03. Multi-Point BYOM



S04. IP to USB



S05. Recording and Live Streaming



S06. Motion Tracking



S07. Audio Routing



Third Party Partners



More Details



Contact Sales

Provides product consultation, project planning, and quotation support.



Book a Live Demo

Provides online or onsite live demo appointment scheduling.



ProAV Lab Blog

Provides ProAV use cases, technical articles, and deployment insights.



Download Documents

Provides catalogs, solution brochures, and technical documents for download.



Lumens YouTube

Provides product introductions, tutorials, and customer success videos.